



STANDARD



Bilda BLD-HM08D
Emergency backup available



APPLICATIONS

This 2x2 Back-Lit LED panel series is designed to deliver general ambient lighting in a variety of indoor settings including schools, offices, hospitals, stores, and is the perfect choice for both new construction and retrofits. This high-efficacy fixture is CCT and power tunable as well as standard 0-10 V dimming capability.

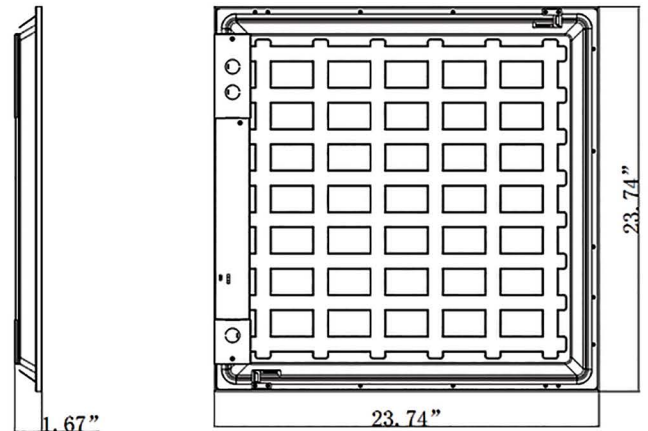
FEATURES

- * CCT: Color temperature selectable 35K, 4K, 5K
- * Adjustable power: 30W, 35W, 40W
- * 125 Lumens per watt
- * Long-life LEDs provide 50,000 hours of operation with at least 70% of initial lumen output (L70)
- * Universal 100-277 AC voltage (50-60Hz) is standard
- * 0-10 vdc dimming capability is standard
- * Power factor > 0.90 and CRI > 80
- * Viewing angle: 120 degrees
- * Easy installation in new construction or retrofit
- * Standard earthquake clips provide secure installation in grid ceilings
- * Standard mounting using recessed mounting in grid ceilings. Optional surface mount kit SMKT-22. Also optional is a 6 x 2 ft cable suspension kit SK6
- * BLD-HM08D emergency backup driver available

WARRANTY / LISTING

- * *UL listed*
- * *Suitable for temperatures from (-4°F to 140°F)*
- * *DLC standard listed*
- * *5 year warranty*

DIMENSIONS

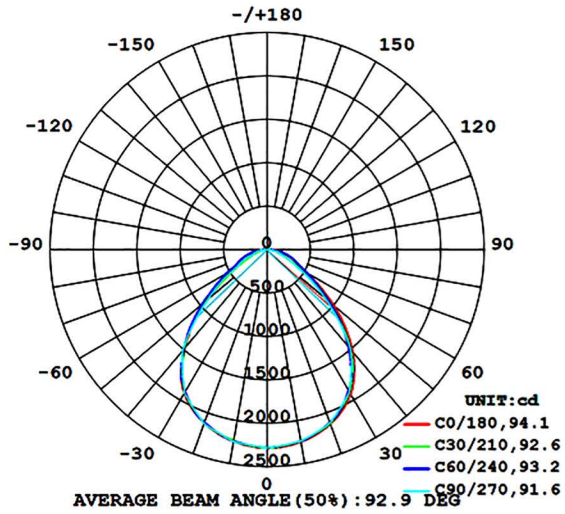


ORDERING INFORMATION

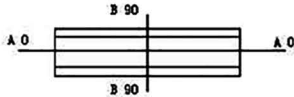
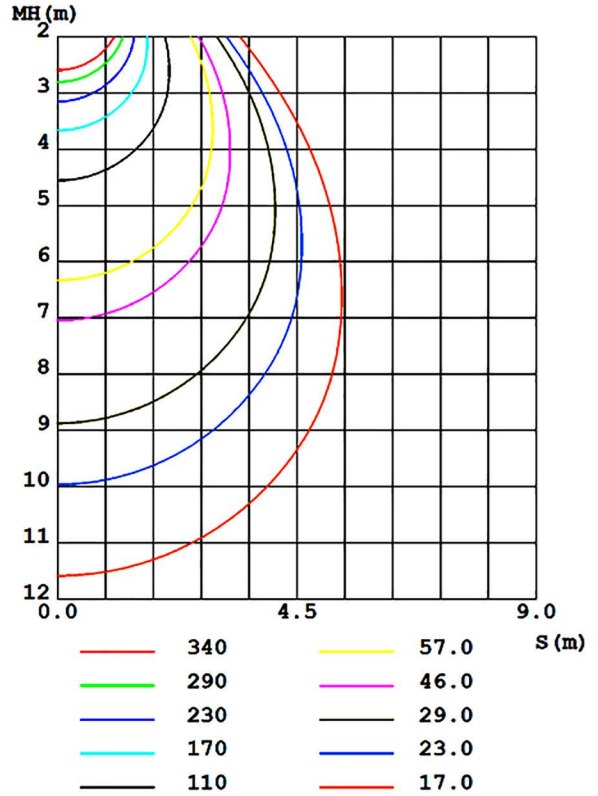
PART #	LUMENS	WATTAGE SELECTABLE	LUMENS / W	CCT TUNABLE	ACCESSORIES (order separately)
CLL-BPL603-603-40W-P-TCP	3750,4375,5000 Lm	30,35,40w	125	35K, 4K, 5K	Surface Mounting kit and suspension Kits available BILDA HM08D emergency backup

PHOTOMETRIC DATA

LUMINOUS INTENSITY DISTRIBUTION DIAGRAM



C0 PLANE ISOLUX DIAGRAM (UNIT:lx)



Flux out: 3427 lm

Height	Eavg, Emax	Angle: 91.47deg	Diameter
1m	1017, 2282lx		205.21cm
2m	254.3, 570.5lx		410.42cm
3m	113.0, 253.6lx		615.63cm
4m	63.58, 142.6lx		820.83cm
5m	40.69, 91.29lx		1026.04cm
6m	28.26, 63.39lx		1231.25cm
7m	20.76, 46.57lx		1436.46cm
8m	15.90, 35.66lx		1641.67cm
9m	12.56, 28.17lx		1846.88cm
10m	10.17, 22.82lx		2052.08cm

Note: The Curves indicate the illuminated area and the average illumination when the luminaire is at different distance.