



STANDARD



APPLICATIONS

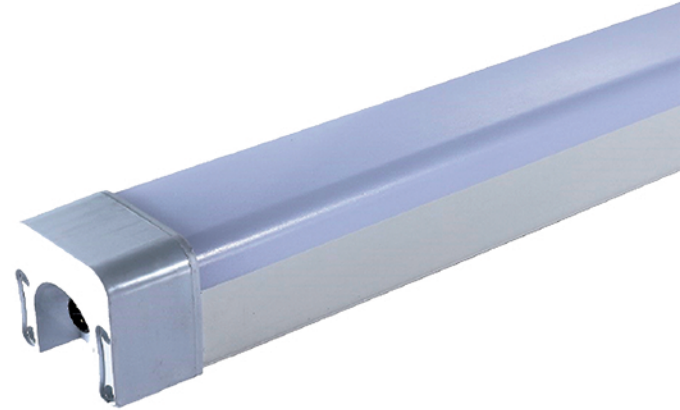
This LED Triproof Lights is Water-proof, Dust-proof and Pressure-proof. It is designed to be used inside warehouse, parking garages car washing areas, shopping malls & other general areas. Up to 6 units can be connected together in series. This series has a premium LED driver with thermal management which helps to produce high performance illumination rated to last a minimum of 50,000 hrs of operation

FEATURES

- Color temperature : 5000K
- Long-life LEDs provide 50,000 hours of operation
- CRI > 85
- Universal 120-277 AC voltage (50-60Hz) is standard
- Suitable for "wet" location
- Power factor > 0.93
- Beam Angle: 120 degrees
- Color rendering index > 85
- Working temperature: -40 F +104 F

ORDERING INFORMATION

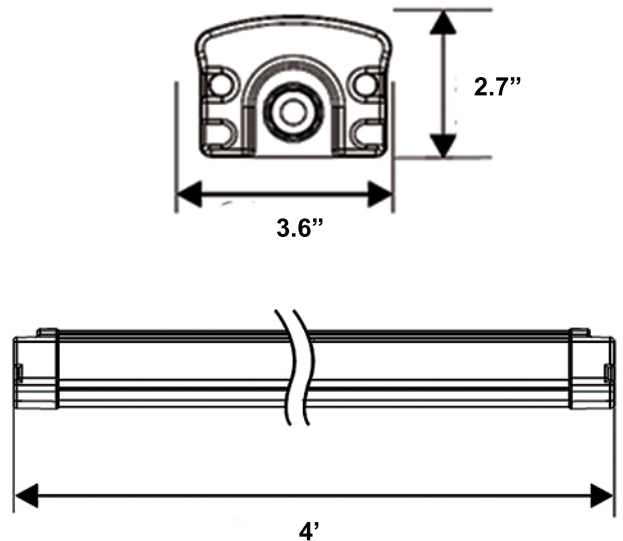
PART #	Color Temp	Lumens	Lumen/watt	Wattage
DTH-TP4-40W-5K	5000k	5,200	130	40



WARRANTY & DETAILS

- UL Listed
- DLC Listed
- 5-year warranty

DIMENSIONS



Part No	DTH-TP4	CRI	> 85 Ra
Lumen / watt	130 LU	Power factor	> 0.93
Lumens	5200 LU	Total Harmonic Distortion	< 20%
Beam Angle	120°	Material	ABS Housing / Polycarbonate Lens
CCT	5000K	Operating Temperature	-40°F to 104°F
Input Voltage	AC 120-277V	Life Span	>50,000 Hrs
Power Frequency	50-60 Hz	Ingress protection	IP 65

PHOTOMETRIC DATA

