



## STANDARD



Bilda BLD-HM08D  
Emergency backup available



### APPLICATIONS

This 2x4 Back-Lit LED panel is designed to deliver general ambient lighting in a variety of indoor settings including schools, offices, hospitals, stores, and is the perfect choice for both new construction and retrofits. This high-efficacy fixture is CCT and power tunable as well as standard 0-10 V dimming capability.

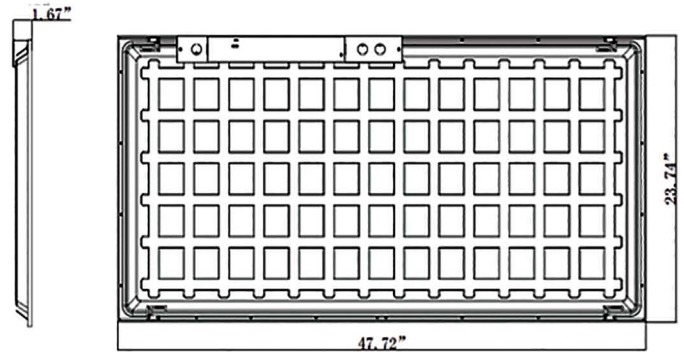
### FEATURES

- \* CCT: Color temperature selectable 35K, 4K, 5K
- \* Adjustable power: 30W, 40W, 50W
- \* 125 Lumens per watt
- \* Long-life LEDs provide 50,000 hours of operation with at least 70% of initial lumen output (L70)
- \* Universal 100-277 AC voltage (50-60Hz) is standard
- \* 0-10 vdc dimming capability is standard
- \* Power factor > 0.90 and CRI > 80
- \* Viewing angle: 120 degrees
- \* Easy installation in new construction or retrofit
- \* Standard earthquake clips provide secure installation in grid ceilings
- \* Standard mounting using recessed mounting in grid ceilings. Optional surface mount kit SMKT-22. Also optional is a 6 x 2 ft cable suspension kit SK6
- \* BLD-HM08D emergency backup driver available

### WARRANTY / LISTING

- \* *UL listed*
- \* *Suitable for temperatures from (-4°F to 140°F)*
- \* *DLC standard listed*
- \* *5 year warranty*

### DIMENSIONS

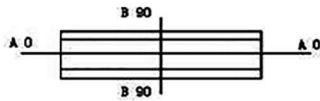
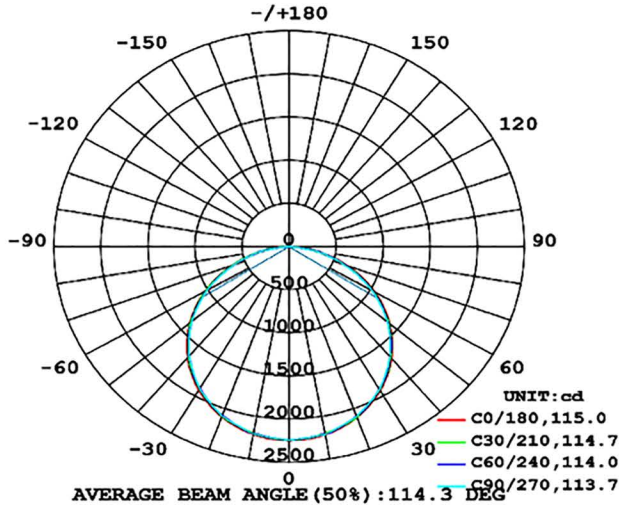


### ORDERING INFORMATION

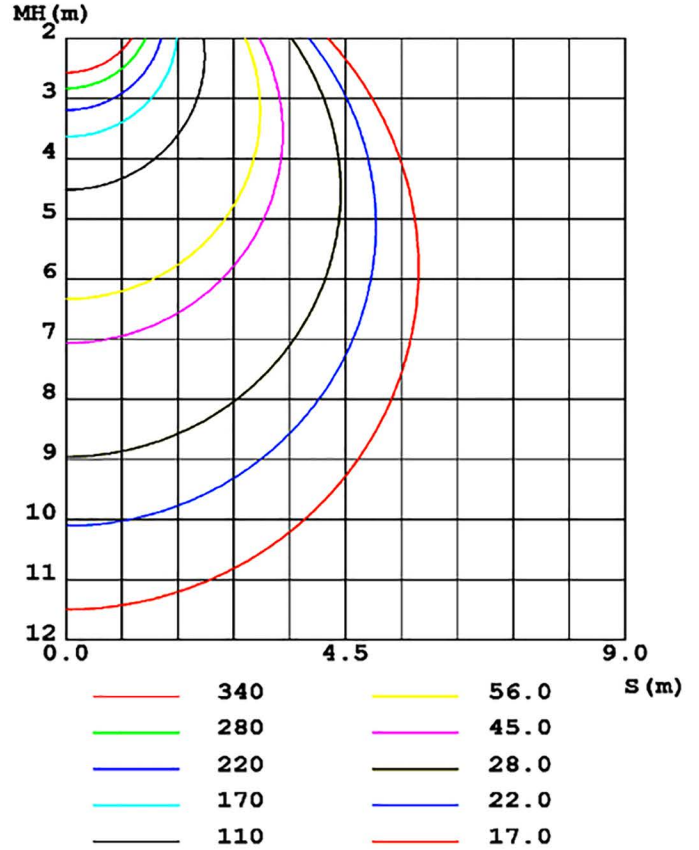
PART #	LUMENS	WATTAGE SELECTABLE	LUMENS / W	CCT TUNABLE	ACCESSORIES (order separately)
CLL-BPL1212-603-50W-P-TCP	3750,5000,6250 Lm	30,40,50w	125	35K, 4K, 5K	Surface Mounting kit and suspension Kits available BILDA HM08D emergency backup

## PHOTOMETRIC DATA

LUMINOUS INTENSITY DISTRIBUTION DIAGRAM



C0 PLANE ISOLUX DIAGRAM (UNIT: lx)



Flux out: 4818 lm

Height	Eavg, Emax	Angle: 113.71deg	Diameter
1m	646.8, 2245lx		306.27cm
2m	161.7, 561.3lx		612.54cm
3m	71.87, 249.5lx		918.80cm
4m	40.43, 140.3lx		1225.07cm
5m	25.87, 89.8lx		1531.34cm
6m	17.97, 62.3lx		1837.61cm
7m	13.20, 45.8lx		2143.88cm
8m	10.11, 35.0lx		2450.14cm
9m	7.985, 27.7lx		2756.41cm
10m	6.468, 22.4lx		3062.68cm

Note: The Curves indicate the illuminated area and the average illumination when the luminaire is at different distance.