



Certified LED Lights®

Product Data Sheet
Architectural Downlight 6"



Product Overview

The 6" Architectural Canless Downlight is a recessed retrofit solution that has an integrated LED power supply. Spring installation directly in the ceiling without a housing. It is perfect for new construction. This high-efficacy fixture provides long-life and uniform illumination as well as standard 0-10V dimming capability and comes with a 5 year warranty.

It is 5 wattage 12, 16, 22, 26, 30 and 5 CCT 27, 30, 35, 40 and 50K selectable to fit most needs. It is the perfect choice for both new construction and retrofits making it ideal for offices, schools, hospitals, and other indoor spaces. The light engine is comprised of long-lasting, energy-efficient LEDs mounted on aluminum heat sinks. In addition to reducing heat dissipation, this setup extends the life of the product. Even after 50,000 hours of continuous operation, these LEDs maintain 90% of their light output.

An independent laboratory tests our lights and LED components to ensure they meet the IESNA LM-79 and LM-80 standards. LED color temperature is warrantied to shift no more than 180K over the standard warranty period. Correlated Color Temperature (CCT) follows the guidelines set forth in the American National Standard for Specifications for the Chromaticity of Solid State Lighting (SSL) Products, ANSI C78.377-2017.

Applications



Schools



Offices



Commercial
Buildings



Healthcare

- * CCT: 5 color temperature selectable in the field
- * Wattage: 5 adjustable power selectable in the field
- * ETL listed for wet location
- * FCC Part 15, Class B
- * IP54
- * 114 to 135 lumens per watt
- * Long-life LEDs provide 50,000 hours of operation
- * Universal 100-277 AC voltage (50-60Hz) is standard
- * 0-10 V dimming capability is standard
- * Designed with integral whip to connect directly to a junction box; Ideal for installation into existing CFL pin-based fixture infrastructure
- * Durable thermoplastic and aluminum construction.

Product Warranty



Highlights and Certifications



ETL Listed



Wet Location



IP54



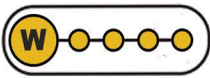
Dimming: 0-10V



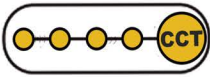
FCC Part 15
Class B



IC rated



Field selectable wattage 5-way dip switch:
12, 16, 22, 26, 30W



Field selectable CCT 5-way switch: 27K,
3K, 35K, 4K 5K

Key Specifications

- * CCT: color temperature selectable 27K, 3K, 35K, 4K, 5K
- * Adjustable power: 12, 16, 22, 26, 30W
- * LED chips 2835 with built-in driver
- * Operating temperatures from -4°F to 104°F
- * Storage temperature from -4°F to 158°F
- * Power factor > 0.90
- * THD < 20%
- * CRI > 80
- * Viewing angle: 120 degrees
- * Easy installation in new construction or retrofit
- * Compatible w/ most 6" architectural housings or frames
- * Universal Housing Compatibility
- * The adjustable housing clips allow for installation in a large range of commercial and architectural housings. These spring-action clips push up easily and fit securely for both retrofit and new construction installations.

Performance

12 Watts						16 Watts					
Color	2700	3000	3500	4000	5000	Color	2700	3000	3500	4000	5000
Lumens	1,417	1,450	1,527	1,573	1,627	Lumens	1,877	1,935	2,044	2,096	2,149
Lumens / Watt	118	120	127	131	135	Lumens / Watt	117	120	127	131	134
22 Watts						26 Watts					
Color	2700	3000	3500	4000	5000	Color	2700	3000	3500	4000	5000
Lumens	2,523	2,622	2,782	2,841	2,895	Lumens	3,022	3,023	3,217	3,272	3,302
Lumens / Watt	114	119	126	129	131	Lumens / Watt	116	116	123	125	127
30 Watts											
Color	2700	3000	3500	4000	5000						
Lumens	3,246	3,423	3,653	3,691	3,681						
Lumens / Watt	108	114	121	123	122						

Performance data is based on a test at 120V

Power Box

- * PC material
- * Internal flicker free driver
- * 0-10V dimming

Color Select Adjustment Switch

Set dip switch to adjust wattage between 2700K, 3000K, 3500K, 4000K and 5000K

Spring Installation

Can be installed in the ceiling directly without junction box or can

Flexible steel conduit with 1/2" KO (3/8" trade size snap in connector)

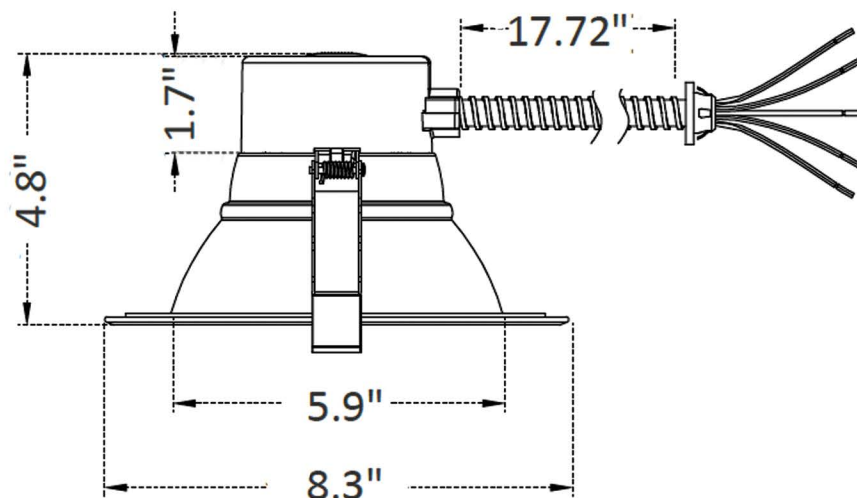
Power Select Adjustment Switch

Set dip switch to adjust wattage between 12W, 16W, 22W, 26W and 30W

5000K
4000K
3500K
3000K
2700K

30W
26W
22W
16W
12W


Dimensions



Ordering guide

PART#	LUMENS	WATTS SELECTABLE	LM/W	CCT COLOR TEMPS
CLL-DL254-6-30W-A5C5-HO	1417 TO 3691	12,16,22,26,30	108-135	27,30,35,40,50K

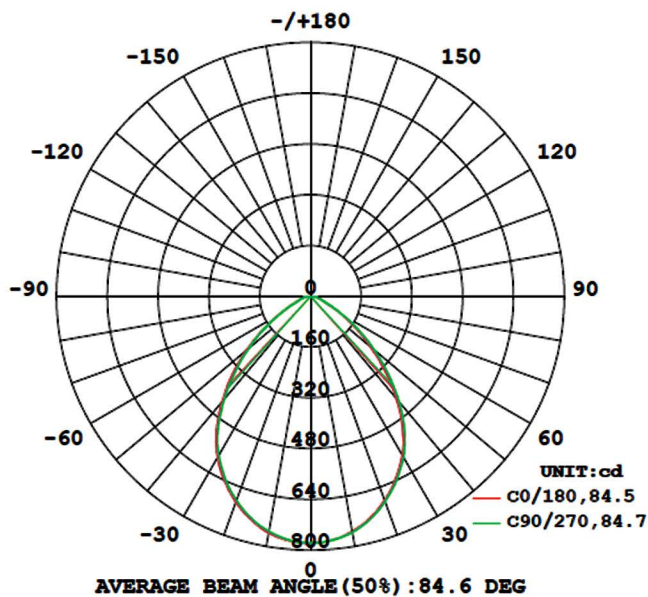
Accessories ordering guide

CATEGORY	PART #	DESCRIPTION	NOTE	PICTURE
EM Driver	BLD-HM25D	25W emergency driver specifically designed for downlights	Order separately	

Photometric Data

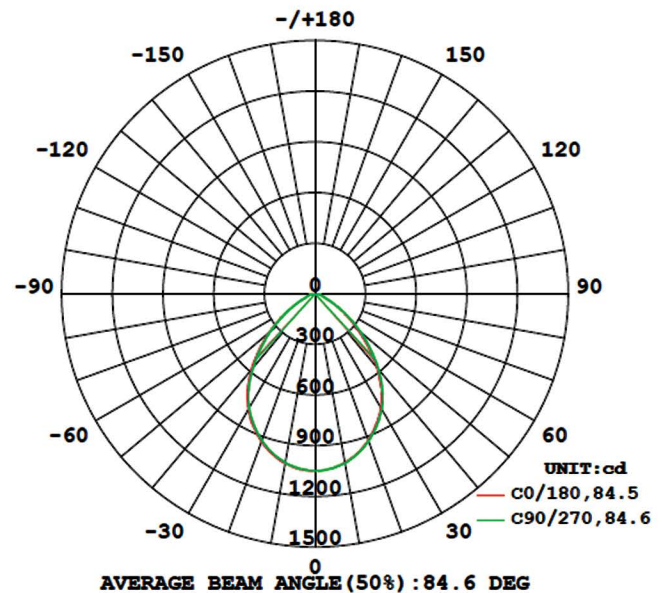
12W @ 3500K

LUMINOUS INTENSITY DISTRIBUTION DIAGRAM



16W @ 3500K

LUMINOUS INTENSITY DISTRIBUTION DIAGRAM

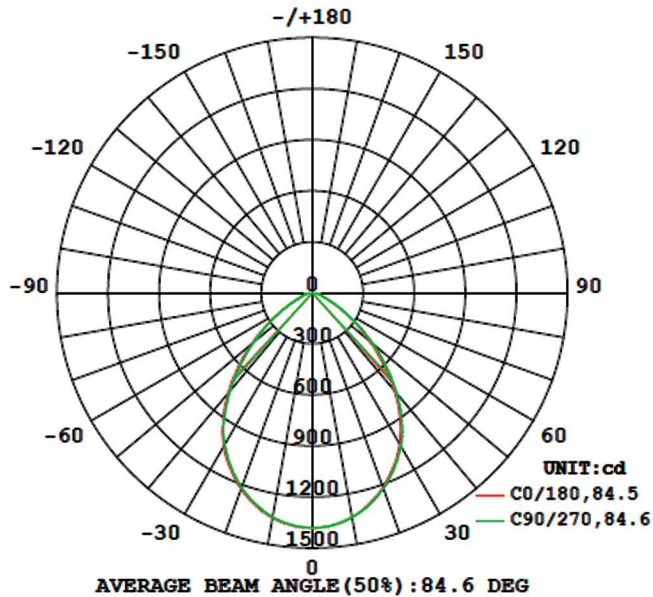




Photometric data

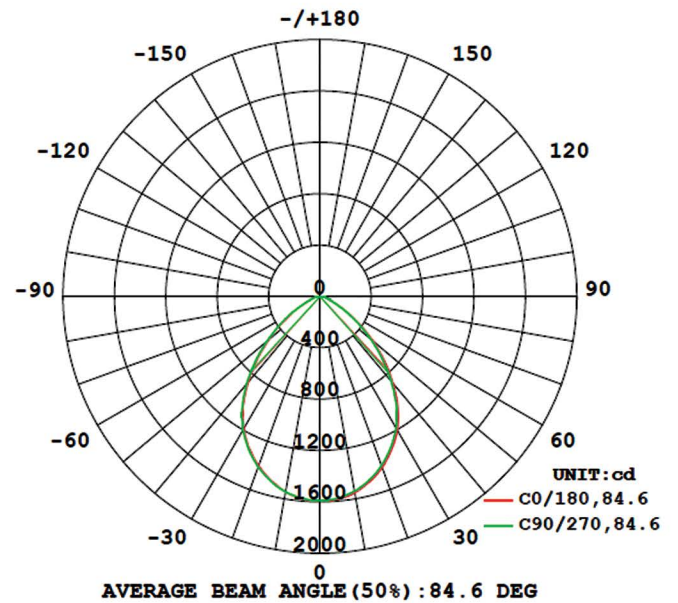
22W @ 3500K

LUMINOUS INTENSITY DISTRIBUTION DIAGRAM



26W @ 3500K

LUMINOUS INTENSITY DISTRIBUTION DIAGRAM



30W @ 3500K

LUMINOUS INTENSITY DISTRIBUTION DIAGRAM

